

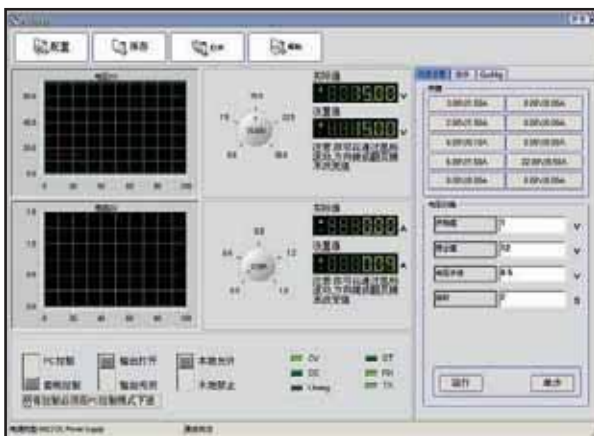
IT6800 programmable power supply

The IT6800 Series power supplies are high performance single-output programmable DC power supplies with optional GIPB/USB/RS232 communication interface. The combination of bench-top and system features in these power supplies provides versatile solutions for your design and test requirements. Also provide you PV6800 monitor software for free

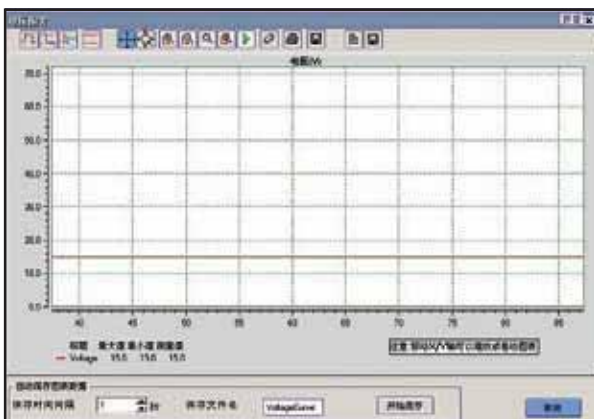


IT6833

IT6833 provides power up to 216W with the smallest size of 1/2 2U



PV6800 with powerful monitoring function, can record and display voltage/current, and complete automatic test through programming.



PV6800 software has built-in powerful waveform tracking function. User can export the datas to excel type for further analysis.

Feature

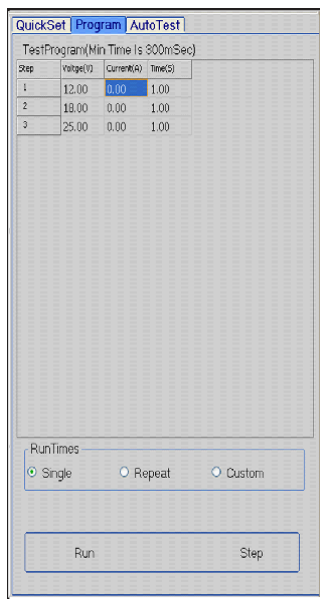
- Nice appearance, small-size and light weight
- VFD display
- Soft Rubber numeric keypad
- Adjustable & constant voltage outputs
- Adjustable & constant current outputs
- Output on/off
- High accuracy and high resolution
- Excellent load and line regulation
- Low ripple and noise
- Limit voltage protection
- Over current/temperature protection
- Sixteen operating states storage
- Additional power supplies

IT6800 series is linear power supply and provides reliable performance and high stability for laboratory tests. User can easily operate it with keypads and read the actual voltage and current



Specifications

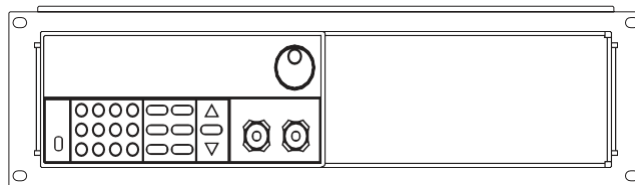
		IT6821	IT6822	IT6823	IT6831	IT6832	IT6833	IT6834
Output Rating	Voltage	18V	32V	72V	18V	32V	72V	150V
	Current	5A	3A	1.5A	10A	6A	3A	1.2A
	Power	90W	96W	108W	180W	192W	216W	180W
Load Regulation	Voltage	<0.01% + 3mV (rating <= 3A)						
	Current	<0.02% + 5mV (rating <=10A)						
Line Regulation	Voltage	<0.01% + 3mA						
	Current	<0.01% + 3mV						
Setup Resolution	Voltage	10mV						
	Current	10mA						
Read Back Resolution	Voltage	10mV(<20V) / 100mV(>=20V)						
	Current	10mA						
Setup Accuracy	Voltage	<0.05% + 10mV	<0.05%+15mV	<0.05%+10mV	<0.05%+15mV	<0.05%+15mV	<0.1%+38mV	
	Current	0.2% + 10mA						
Read Back Accuracy	Voltage(<20V)	<0.05% + 15mV	<0.05%+20mV	<0.05%+15mV	<0.05%+15mV	<0.05%+20mV	<0.1%+38mV	
	(>=20V)	<0.05% + 120mV	<0.05%+20mV	<0.05%+120mV	<0.05%+120mV	<0.05%+120mV	<0.1%+120mV	
	Current	0.1% + 15mA						
Ripple (20-20M Hz)	Vpp	3mVp-p	4mVp-p	3mVp-p	4mVp-p	4mVp-p	7mVp-p	
	Vrms	0.5mVrms						
	Irms	5mArms						
Temp. Coefficient	Voltage	<0.02% + 5mV						
	Current	<0.1% + 5mA						
		0-40 • •						
Dimension	W*H*D	214.5mm * 88.2mm * 354.6mm						
Weight	Net	7.8Kg	7.5Kg	7.7Kg	8.5Kg	8.5Kg	8.5Kg	8.5Kg



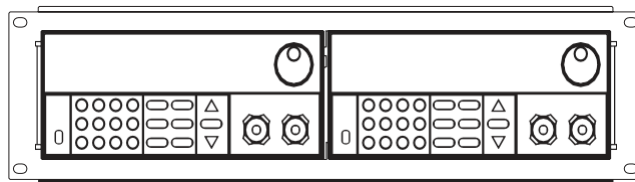
List Function



Sweep function



Installed in a 19-inch rack (One unit)



Installed in a 19-inch rack (Two unit)